



**HARVARD®**

# Dental Products

Made in Germany

**2016**



Argentina

South Korea

Switzerland

Taiwan

Sri Lanka

Nigeria

Pakistan

United Arab Emirates

Israel

Morocco

Venezuela

Germany

Hong Kong

Brazil

Croatia

Lebanon

Spain

Tunisia

India

Italy

Oman

Albania

Philippines

Hungary

Bosnia

Lithuania

Malaysia

Slovakia

Netherlands

Denmark

Iceland

Vietnam

Canada

Turkey

Portugal

Singapore

Kyrgyzstan

Bulgaria

Kuwait

Pakistan

Algeria

Uzbekistan

Georgia

Saudi Arabia

Yemen

Poland

Mexico

Qatar

Iran

China

France

Egypt

Syria

Ghana

**Berlin**

Chile

Serbia

Ireland

Slovenia

Czech Republic

Austria

Afghanistan

USA

Great Britain

Azerbaijan

Estonia

Greece

Peru

Luxembourg

Jordan

Ukraine

Costa Rica

Kazakhstan

Armenia

Macedonia

Sudan

Romania

Cyprus

Mali

Sweden

Indonesia

Uruguay

Much more than you expect.



Dear customer,

Harvard Cement has been used by most dentists in their daily practice over the last 120 years and is known for its high and reliable quality.

Nowadays, we can provide our clients with a wide product range covering a large number of applications in a competent and reliable way. We are proud to say that all our products are produced in our factory in Germany and are of highest quality.

Have a look at our well proven products and our new highest-level materials. We invite you to test and try them and we would be happy to be at your disposal for further information. Please also have a look at our website for more detailed information ([www.harvard-dental.de](http://www.harvard-dental.de)).

Faithfully yours,

**The Harvard Team**



## 1. Composites and Bondings

### a. PremiumLine

Harvard PremiumFill	6
Harvard PremiumFlow	6
Harvard IonoLine	6
Harvard InterLock	7
Harvard Bond SE Mono	7

### b. BasicLine

Harvard Restore	8
Harvard RestoreFlow	8
Harvard Self-Bond	8
Harvard Bond TE Mono	8
Harvard Etch	8

## 2. Post Cementing and Core Build-Up

Harvard ZirconCore	9
Harvard Bond SE Dual	9
Harvard LuteCem SE	9

## 3. Endodontics

### a. PremiumLine

Harvard MTA XR Flow Fast OptiCaps®	11
Harvard MTA XR Flow EWT OptiCaps®	11
Harvard MTA XR Flow EWT & EndoDirect syringe	11
Harvard MTA XR OptiCaps®	11
Harvard MTA XR Fast OptiCaps®	11

### b. BasicLine

Harvard MTA (Universal) OptiCaps®	12
Harvard MTA (Universal) HandMix	12
Harvard CalciumHydroxide	12
Harvard CalciumHydroxide LC	12

## 4. Temporary Materials

### a. PremiumLine

Harvard TEMP C&B	13
Harvard TEMP Glaze LC	13
Harvard Implant Semi-permanent	13

### b. BasicLine

Harvard TEMP C&B Pro	14
Harvard TEMP Cem	14
Harvard TEMP Cem EasyDose®	14

## 5. Cements

Harvard Cement (zinc phosphate cement)	15
Harvard Polycarboxylat Cement	15
Mixing Advice of Harvard Cement	16

### 5.1 Glass Ionomer Cements for Restorations

#### a. PremiumLine

Harvard Ionoglas Fill Extra	17
Harvard Ionocoat LC	17
Harvard Ionoresin Fill	17
Harvard Ionoresin Prime LC	17

#### b. BasicLine

Harvard Ionoglas Fill	18
Harvard Ionoglas Fill LC	18

### 5.2 Glass Ionomer Cements for Luting

#### a. PremiumLine

Harvard Ionoglas Cem Extra	19
Harvard Ionoresin Cem	19

#### b. BasicLine

Harvard Ionoglas Cem	20
Harvard Ionoglas Cem LC	20

## 6. Bite Registration and Impression Materials

Harvard Bite	21
Harvard PremiumSil	21
Harvard TraySive	21

## 7. Accessories and More

a. Accessories	22
b. Impression Compounds	23
c. Baseplates	23
d. Instructions for OptiCaps® “Click before you mix!”	24

## 8. Index

# 1. Composites and Bondings

## a PremiumLine

### Harvard PremiumFill

Esthetic, light cure, low shrink composite with a nice non-sticky and easily mouldable consistency



#### Properties and advantages

- Superior handling properties
- Non-sticky consistency & highly sculptable
- Low polymerization shrinkage
- Tooth-like fluorescence
- Excellent high gloss polishability
- High abrasion resistance
- Optimal physical properties
- Nano-filler technology

#### Article

Shade Assortment: 7 syringes ea. 4 g, in the shades A1, A2, A3, A3.5, B2, Den, Inc

4 g syringe  
Shade A1  
Shade A2  
Shade A3  
Shade A3.5  
Shade B2  
Shade Den  
Shade Inc

Pack 20 OptiTips® ea. 0.3 g

Shade A1  
Shade A2  
Shade A3  
Shade A3.5  
Shade B2

Harvard Applier OptiTips®

#### Order no.

7082210  
7082201  
7082202  
7082203  
7082204  
7082205  
7082206  
7082207

7083621  
7083624  
7083625  
7083626  
7083627  
7095200

### Harvard PremiumFlow

Flowable, light cure, low shrink composite with improved nano-filler technology



#### Properties and advantages

- Optimal flowable consistency
- Excellent high gloss polishability
- Beautiful esthetic restorations
- Low polymerization shrinkage
- Low wear
- Improved mechanical properties

#### Article

2 ml syringe, 6 needle tips

Shade A1  
Shade A2  
Shade A3  
Shade A3.5  
Shade B2  
Shade Den  
Shade Inc

Pack 20 OptiTips® ea. 0.25 g

Shade A1  
Shade A2  
Shade A3  
Shade A3.5  
Shade B2

Harvard NeedleTips H17,

refill bag with 50 pcs.

Harvard ErgoGrip

Harvard Applier OptiTips®

#### Order no.

7082211  
7082212  
7082213  
7082214  
7082215  
7082216  
7082217

7083623  
7083628  
7083629  
7083630  
7083631

7095157  
7082220  
7095200

### Harvard IonoLine

Light cure resin-based ionomer glass liner / base material



#### Properties and advantages

- Perfectly flowing liner and base material
- Fluoride release
- Radiopaque

#### Article

2 ml syringe, 3 needle tips

Harvard NeedleTips H20,  
refill bag with 50 pcs.

#### Order no.

7071260

7091226

# Composites and Bondings

## a PremiumLine

### Harvard InterLock

Very strong, self-etch, light cure bonding



#### Properties and advantages

- Extremely reliable
- High and even bond strength
- Easy and fast application
- Excellent seal
- Not technique and moisture sensitive
- Long-term and safe adhesion to enamel and dentin
- Hydrophilic for wet bonding technique

#### Article

2 x 5 ml bottle, 50 micro applicators, 5 mixing wells

#### Order no.

7083603

### Harvard Bond SE Mono

Self-etch light cure bonding, etching, priming and bonding in one step



#### Properties and advantages

- Only one layer necessary
- Strong and long-lasting adhesion to enamel and dentin
- Hydrophilic for wet bonding technique
- Also available as SingleDose

#### Article

5 ml bottle, 25 Microbrush®, 5 mixing wells

5 ml bottle

50 SingleDoses ea. 0.15 ml, 50 Microbrush®

#### Order no.

7083604

7083601

7083609

# Composites and Bondings

## b BasicLine

### Harvard Restore

Universal light cure microhybrid composite



#### Properties and advantages

- Suitable for anterior and posterior restorations
- Nice non-sticky consistency
- Low wear
- Good polishability
- Tooth-like fluorescence

#### Article

4 g syringe  
Shade A1  
Shade A2  
Shade A3  
Shade A3.5  
Shade B1  
Shade B2  
Shade B3  
Shade C3  
Shade C4  
Shade Inc  
Shade A1 opaque  
Shade A2 opaque

#### Order no.

**System Kit TE Mono**  
4 syringes ea. 4 g, shades A1, A2, A3, A3.5  
3 ml syringe Harvard Etch, 5 ml bottle Harvard Bond TE Mono  
5 mixing wells, 50 Microbrush®, 5 needle tips

#### Order no.

**System Kit Self-Bond**  
4 syringe ea. 4 g, shades A1, A2, A3, A3.5  
3 ml syringe Harvard RestoreFlow, shade A2  
5 ml bottle Harvard Self-Bond, 5 mixing wells, 50 Microbrush®,  
5 needle tips

#### Order no.

**System Kit Self-Bond Vers. 2A2**  
4 syringes ea. 4 g, shades A1, 2 x A2, A3

#### Article

3 ml syringe, 3 needle tips  
Shade A1  
Shade A2  
Shade A3  
Shade A3.5  
Harvard NeedleTips H20,  
refill bag with 50 pcs.

#### Order no.

7083201  
7083202  
7083203  
7083204  
7083221  
7083222  
7083205  
7083206  
7083215  
7083209  
7083210

#### Order no.

7091226

### Harvard RestoreFlow

Universal, flowable, light cure microhybrid composite



#### Properties and advantages

- Suitable for anterior and small posterior restorations and for lining of cavities
- Perfect flowable consistency
- Good mechanical properties
- Tooth-like fluorescence
- Controlled flow

#### Article

5 ml bottle

#### Order no.

7083218

### Harvard Self-Bond

Self-etch, light cure bonding



#### Properties and advantages

- No extra etching necessary
- Only one layer necessary
- Easy application
- Hydrophilic for wet-bonding technique

### Harvard Bond TE Mono

Light cure one bottle adhesive for total-etch technique



#### Properties and advantages

- Very strong bonding to enamel and dentin
- Very strong bonding of light cure composites, non-precious and precious metals
- Hydrophilic for wet-bonding technique

#### Article

5 ml bottle

#### Order no.

7083607

### Harvard Etch

Thixotropic etching gel for etching of enamel and dentin



#### Properties and advantages

- Selective enamel etching or total etch technique for:
  - Composite restorations
  - Sealing of fissures
  - Adhesive cementation of inlays, onlays, crowns and bridges
- Optimal consistency: stay where placed

#### Article

2 ml syringe, 3 needle tips  
Harvard NeedleTips H25,  
refill bag with 50 pcs.

#### Order no.

7054000

#### Order no.

7095126

## 2. Post Cementing and Core Build-Up

### Harvard ZirconCore

Dual cure core build-up and post cementation composite



#### Properties and advantages

- Optimal consistency for two indications: post cementing and core build-up
- "Cuts like dentin"
- Very good mechanical properties for durable restorations
- Contains substantial amount of nano-zirconium dioxide particles
- Fluoride release
- Very good radiopacity
- For post luting use with Harvard Bond SE Dual for an optimal result

#### Article

5 ml minimix syringe, 10 mixing tips,  
10 intra tips long, shade A3  
Harvard Mini 1:1 O-Brown,  
refill bag with 50 pcs.  
Harvard IntraTips long,  
refill bag with 50 pcs.

#### Order no.

7083600

7083610

7083620

### Harvard Bond SE Dual

Dual cure self-etch bonding (2 components, 1 step)



#### Properties and advantages

- Etching, priming and bonding after mixing in one step
- Only one layer necessary
- Strong and long-lasting adhesion to enamel and dentin
- Dual cure for application with dual cure composites
- Hydrophilic for wet bonding technique
- For use in the root canal for post luting with dual cure composites e.g. Harvard ZirconCore

#### Article

2 x 5 ml bottle, 50 Microbrush®,  
5 mixing wells  
2 x 5 ml bottle

#### Order no.

7083602

7083605

### Harvard LuteCem SE

Self-adhesive dual cure resin-modified luting cement



#### Properties and advantages

- Self-adhesion: no etching, priming or bonding necessary
- Suitable for two indications: luting of posts and crowns
- Dual cure
- Fluoride release
- Virtually no shrinkage or expansion

#### Article

5 ml minimix syringe, 15 mixing tips,  
5 intra tips long  
Shade translucent  
Shade A2  
Harvard Mini 4:1 / 10:1 S-Brown,  
refill bag with 50 pcs.  
Harvard Mini 4:1 / 10:1 O-Brown,  
refill bag with 50 pcs.  
Harvard IntraTips long,  
refill bag with 50 pcs.

#### Order no.

7081101

7081105

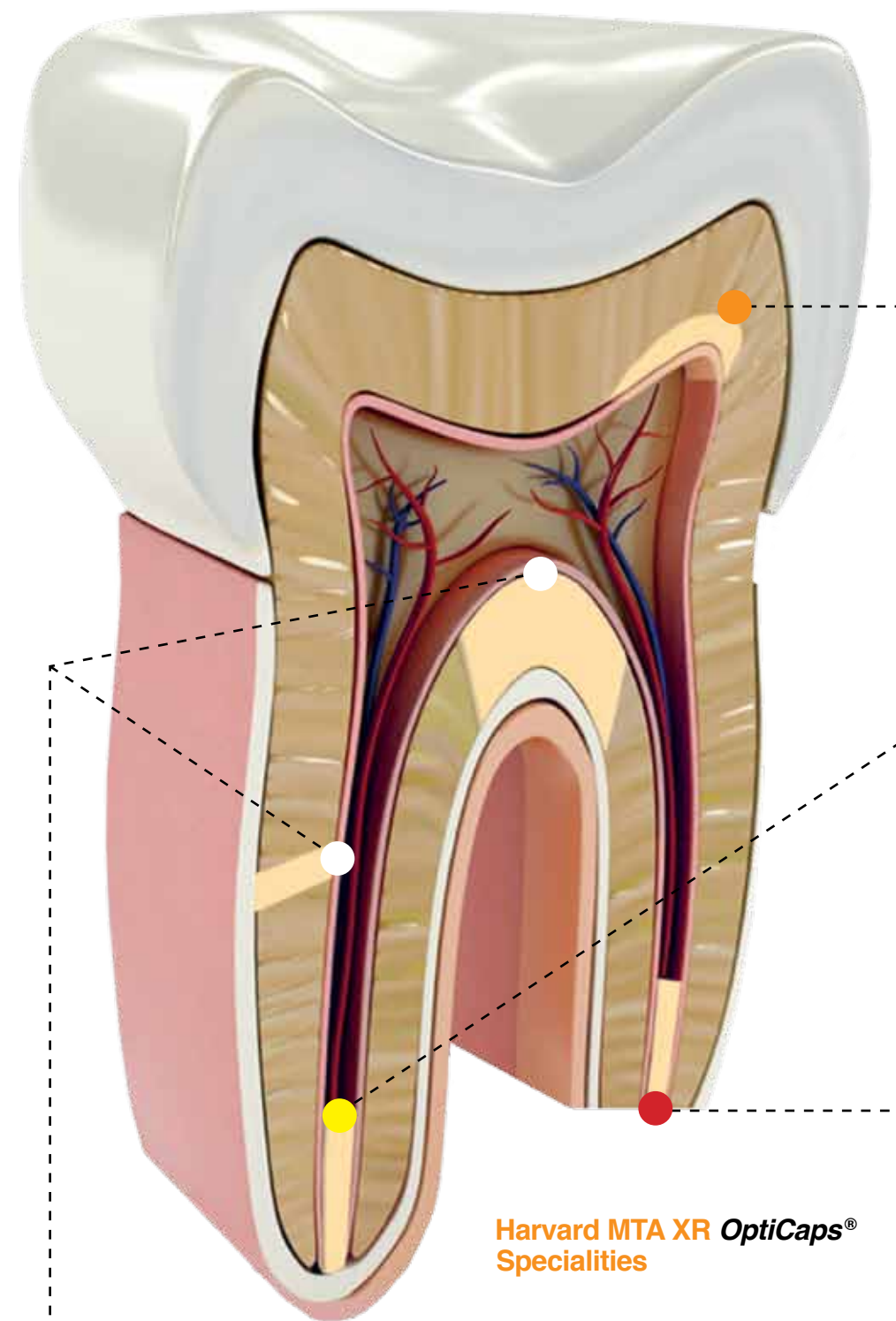
7093050

7091100

7083620

# Harvard MTA.

## The perfect product for each endodontic application.



Harvard MTA XR OptiCaps® Specialities

### 3. Endodontics

a PremiumLine

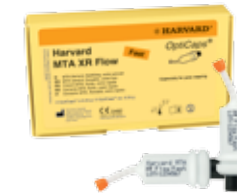
#### Advantages of all Harvard MTA OptiCaps®

- Forms tertiary dentin over the pulp, e.g. dentin bridge
- Biocompatible material
- Excellent bond to dentin

#### Specialities:

##### Harvard MTA XR Flow Fast OptiCaps®

Flowable fast setting MTA cement in capsules



#### Properties and advantages

- Flowable consistency
- Fast setting
- Specially recommended for pulp capping
- Mixing time: 30 sec
- Working time: 120 sec\*

#### Article

2 OptiCaps® ea. 0.25 g,  
ea. packed in an aluminium pouch  
Harvard Applier OptiCaps®

#### Order no.

7081503  
7092000

##### Harvard MTA XR Flow EWT OptiCaps®

Flowable MTA cement in capsules  
with extended working time



#### Properties and advantages

- Flowable consistency
- Extra long working time (4 min)
- Specially recommended for root end fillings (orthograde)
- Setting unaffected by humidity
- Mixing time: 30 sec
- Working time: 240 sec (4 min)\*

#### Article

2 OptiCaps® ea. 0.25 g,  
ea. packed in an aluminium pouch

#### Order no.

7081504

##### Harvard MTA XR Flow EWT & EndoDirect syringe

First reliable application form for MTA  
to fill the apex directly and easily



#### Easy to use:

1. Mix the MTA caps
2. Fill the endo syringe with the material direct from the capsule
3. Thanks to the bendable endo tip and the endo-stopp, fill comfortable the MTA cement into the root canal

#### Article

2 MTA XR Flow EWT OptiCaps® ea. 0,25 g,  
ea. packed in an aluminium pouch,  
2 MTA EndoDirect syringes  
with bendable endo tip

#### Order no.

7081509

##### Harvard MTA XR Fast OptiCaps®

Fast setting, extra radiopaque  
MTA cement in capsules



#### Properties and advantages

- Firm consistency
- Extra radiopaque
- Fast setting
- Specially recommended for root end filling (retrograde)
- Setting not affected by humidity
- Mixing time: 30 sec
- Working time: 120 sec\*

#### Article

2 OptiCaps® ea. 0.25 g,  
ea. packed in an aluminium pouch

#### Order no.

7081506

##### Harvard MTA XR OptiCaps®

Extra radiopaque MTA cement in capsules



#### Properties and advantages

- Firm consistency
- Extra radiopaque
- Specially recommended for filling of root perforations
- Setting not affected by humidity
- Mixing time: 30 sec
- Working time: 120 sec\*

#### Article

2 OptiCaps® ea. 0.25 g,  
ea. packed in an aluminium pouch

#### Order no.

7081505

\* from the start of mixing

## Endodontics

### Harvard MTA (Universal) OptiCaps®

Endodontic repair cement in capsules based on Mineral-Trioxide-Aggregate



#### Properties and advantages

- Highly biocompatible material
- Excellent bond to dentin
- Radiopaque
- Firm and homogenous consistency directly from the capsule
- Forms tertiary dentin, e.g. dentin bridge
- Setting not affected by humidity
- Next clinical step possible after 5 min
- Suitable for pulp capping, sealing root perforations, root end fillings (orthograde or retrograde)
- **Mixing time: 30 sec**
- **Working time: 120 sec** (from the start of mixing)

### Harvard MTA (Universal) HandMix

Endodontic repair cement based on Mineral-Trioxide-Aggregate



#### Properties and advantages

- Biocompatible material
- Excellent bond to dentin
- Radiopaque
- Forms tertiary dentin over the pulp, e.g. dentin bridge
- Setting not affected by humidity
- Next clinical step possible after 5 min
- Suitable for pulp capping, sealing root perforations, root end fillings (orthograde or retrograde)
- Very easy to mix

### Harvard CalciumHydroxide

Calcium hydroxide paste based on water



#### Properties and advantages

- Paste with perfect consistency
- Suitable for direct and indirect pulp capping and as a liner, e.g. under zinc phosphate cement
- Available in unidose SingleBlis, always fresh to use

### Harvard CalciumHydroxyde LC

Calcium hydroxide liner, light cure



#### Properties and advantages

- Suitable for indirect pulp capping and as a liner for filling procedure
- High pH level with antimicrobial effect
- Optimal flow
- Radiopaque
- Light cure, set on demand

## b BasicLine

#### Article

2 OptiCaps® ea. 0.3 g, ea. packed in an aluminium pouch

#### Order no.

7081502

#### Article

1 g powder, 3 ml liquid, dosing spoon, mixing pad, spatula

#### Order no.

7081507

#### Article

2 ml syringe, 3 needle tips  
20 SingleBlis ea. 0.13 g

#### Order no.

7071261

7071262

#### Article

2 ml syringe, 3 needle tips

#### Order no.

7071263

## 4. Temporary Materials

## a PremiumLine

### Harvard TEMP C&B

Temporary crown and bridge material, ratio 10:1



#### Properties and advantages

- Reliable and easy to use
- Final processing after 5 min
- Very good fracture resistance and hardness specially for veneers and longer bridge spans
- Very low polymerization temperature
- Natural esthetics and fluorescence
- High color stability

#### Article

50 ml automix cartridge ratio 10:1, 10 mixing tips  
Shade A1  
Shade A2  
Shade A3  
Shade A3.5  
Shade Bleach

#### Order no.

7081651  
7081652  
7081653  
7081654  
7081650

Harvard Auto 4:1 / 10:1 S-Blue, refill bag with 50 pcs.

7094000

Harvard Dispenser Automix 4:1 / 10:1

7095000

### Harvard TEMP Glaze LC

Varnish for temporary crowns and bridges



#### Properties and advantages

- Highly esthetic and shiny surface without polishing
- Ideal for crowns and bridges in the visible area

#### Article

30 ml bottle

#### Order no.

7081730

### Harvard TEMP Cem

Eugenol-free temporary luting cement in a minimix syringe



#### Properties and advantages

- Optimal adhesion
- Easy removal of the restoration
- No residual cement on the core
- Contains zinc oxide
- Excellent flow
- Eugenol-free
- Easy removal of excess

#### Article

5 ml minimix syringe, 10 mixing tips  
10 ml minimix syringe, 20 mixing tips

#### Order no.

7081100  
7081200

Harvard Mini 1:1 S-Brown, refill bag with 50 pcs.

7091050

### Special for implant crowns and bridges:

#### Harvard Implant Semi-permanent

Dual cure luting cement for short to long term fixing of implant based crowns and bridges



#### Properties and advantages

- Safe fixing, easy removal, easy recementation
- Elastic polymer film to minimize chewing pressure on the bone
- Excellent sealing, no shrinkage
- Easy removal of excess material
- Contains zinc oxide

#### Article

5 ml minimix syringe, 10 mixing tips

#### Order no.

7081400

Harvard Mini 4:1 / 10:1 S-Brown, refill bag with 50 pcs.

7093050

## Temporary Materials

### Harvard TEMP C&B Pro

Temporary crown and bridge material, ratio 4:1



#### Properties and advantages

- Reliable and easy to use
- Good fracture resistance and hardness
- Low polymerization temperature
- Natural esthetics and fluorescence
- Color stability

### Harvard TEMP Cem EasyDose®

Eugenol-free temporary luting cement in a dosing syringe



#### Properties and advantages

- Handmix – more economic
- Optimal adhesion
- Easy removal of the restoration
- No residual cement on the core
- Contains zinc oxide
- Excellent flow
- Eugenol-free
- Easy removal of excess

## b BasicLine

#### Article

50 ml automix cartridge ratio 4:1,  
10 mixing tips  
Shade A1  
Shade A2  
Shade A3  
Shade A3.5

#### Order no.

7081641  
7081642  
7081643  
7081644

Harvard Auto 4:1 / 10:1 S-Blue,  
refill bag with 50 pcs.

7094000

Harvard Dispenser Automix 4:1 / 10:1

7095000

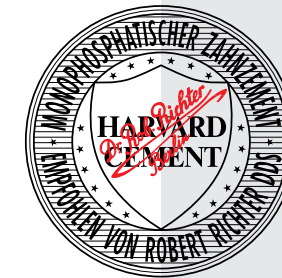
#### Article

10 ml EasyDose® syringe

#### Order no.

7081103

## 5. Cements



### Harvard Cement. The Original. Since 1892.

Zinc phosphate cement for permanent luting of large restorations and for lining  
The classic – well-proven since 1892



#### Properties and advantages

- High compressive strength and low film thickness
- Good biocompatibility
- Easy and safe application
- Unmatched price/performance ratio for luting and lining materials
- Cement according to DIN EN ISO 9917-1
- Available in two setting times: normal and fast setting

#### Harvard Cement normal setting

Article	Order no.	Order no.
Powder shade	Single powder 35 g	Clinic powder 100 g
1 - white	7002501	7002201
2 - bluish white	7002502	7002202
3 - yellowish white	7002503	7002203
4 - light yellow	7002504	7002204
5 - yellow	7002505	7002205
8 - pearl grey	7002508	7002208
12 - brown	7002512	7002212
15 - rose	7002515	7002215
Liquid	Single liquid 15 ml	Clinic liquid 40 ml
	7002600	7002300

#### Harvard Cement quick setting

Article	Order no.	Order no.
Powder shade	Single powder 35 g	Clinic powder 100 g
1 - white	7001501	7001201
2 - bluish white	7001502	7001202
3 - yellowish white	7001503	7001203
4 - light yellow	7001504	7001204
5 - yellow	7001505	7001205
8 - pearl grey	7001508	7001208
12 - brown	7001512	7001212
15 - rose	7001515	7001215
Liquid	Single liquid 15 ml	Clinic liquid 40 ml
	7001600	7001300

10 OptiCaps® ea. 0.5 g, shade Yellowish white 7081310  
50 OptiCaps® ea. 0.5 g, shade Yellowish white 7081350

Harvard Applier OptiCaps® 7092000



#### Also available in OptiCaps®

- Quantity for 1 to 2 crowns
- **Mixing time: 10 sec**
- **Working time: 3 min** (from the start of mixing)

### Harvard Polycarboxylat Cement

Zinc polycarboxylate cement for permanent luting and lining



#### Properties and advantages

- Non-irritant for sensitive teeth
- Cement according to DIN EN ISO 9917-1
- Easy and safe application
- Unmatched price/performance ratio for luting materials

Article	Order no.	Order no.
Powder shade	Single powder 35 g	Clinic powder 100 g
3 - yellowish white	7031503	7031203
4 - light yellow	7031504	7031204
Liquid	Single liquid 15 ml	Clinic liquid 40 ml
	7031600	7031300



## Mixing Advice

### For Harvard Cement



1

Dispense onto a clean, dry glass plate at approx. 23 °C (73 °F).



2

Divide into portions as follows: 1/2, 1/4, 1/8, 1/8.



3

Mixing: start first 1/8 with the whole liquid quartely within 15 seconds.



4

Add second 1/8 and mix for 15 seconds while spreading.



5

Draw 1/4 into the mixture.



6

Mix while pressing with flat spatula in the next 30 seconds.



7

Mix with the remaining half portion for 30 seconds.



8

Use the entire surface of glass plate.



9

Ready-for-use cement mix within 90 seconds.

#### Harvard Cement normal setting:

For luting consistency: powder 1.5 g, liquid 1.0 g  
For cavity lining consistency: powder 2.1 g, liquid 1.0 g

#### Harvard Cement quick setting:

For luting consistency: powder 1.8 g, liquid 1.0 g

### For Harvard Polycarboxylat Cement

For mixing of polycarboxylate cement the whole amount of powder is divided into two equal halves. One half is further divided into two equal parts (quarter).

In 30 seconds mix one half of the powder into the liquid. Then the other two quarters are mixed in for another 15 seconds each. This will result in a total mixing time of 60 seconds.

The mixing ratio (by weight) of powder to liquid is 2.9 : 1 (luting cement) or 3.6 : 1 (liner).

## 5.1 Glass Ionomer Cements for Restorations

### a PremiumLine

#### Harvard Ionoglas Fill Extra

Esthetic conventional Glass Ionomer Cement for restorations, self cure



##### Properties and advantages

- Esthetic and natural translucency
- Reduced solubility
- Packs well & easy to handle
- Easy to polish
- Final finish after just 6 minutes
- High fluoride release, biocompatible & radiopaque
- **OptiCaps® mixing time: 10 sec**

##### Article

15 g powder / 8 ml liquid, dosage spoon, mixing pad  
Shade A2  
Shade A3  
Shade A3.5

50 OptiCaps® ea. 0.5 g  
Shade A2  
Shade A3  
Shade A3.5

Harvard Applier OptiCaps®

##### Order no.

7052112  
7052113  
7052135

7052252  
7052253  
7052254

7092000

#### Harvard Ionocoat LC

Light cure protective varnish for conventional glass ionomer restorative cements



##### Properties and advantages

- Easy application
- Light cure
- Free of methylmethacrylate
- Protects the filling from drying during the first hours after curing

##### Article

5 ml bottle

##### Order no.

7052000

#### Harvard Ionoresin Fill

Resin-modified GIC for restorations, light cure



##### Properties and advantages

- Very fine fillers
- Good polishability, nearly like composites
- Very low solubility
- Good mechanical properties
- Fluoride release
- Virtually no shrinkage
- Safe by 3 cure modes: self + light cure + classical cement reaction
- **OptiCaps® mixing time: 10 sec**
- **Working time: 90 sec (1:30 min)** (from the start of mixing)

##### Article

15 g powder / 8 ml liquid, dosage spoon, mixing pad  
Shade A2  
Shade A3  
Shade A3.5

50 OptiCaps® ea. 0.5 g  
Shade A2  
Shade A3  
Shade A3.5

Harvard Applier OptiCaps®

##### Order no.

7071115  
7071116  
7071117

7071250  
7071251  
7071252

7092000

#### Harvard Ionoresin Prime LC

Light cure primer for resin-modified glass ionomer cements



##### Properties and advantages

- Primer to improve the adhesion of resin-modified glass ionomer cements to enamel and dentin
- Easy application
- Light cure
- One bottle system

##### Article

5 ml bottle

##### Order no.

7051000

## Glass Ionomer Cements for Restorations

### Harvard Ionoglas Fill

Conventional glass ionomer restorative cement



#### Properties and advantages

- Self cure
- Final finish and polish after just 6 minutes
- Packs well
- Easy handling and mixing
- Good marginal fit and seal

### Harvard Ionoglas Fill LC

Light cure resin-modified glass ionomer restorative cement



#### Properties and advantages

- Easy to mix and to finish
- Perfect and reliable non-sticky consistency
- Light and self cure
- Low shrinkage
- Radiopaque
- Convenient to apply
- Esthetic fillings

## b BasicLine

#### Article

10 g powder, shade A2 / 5.6 ml liquid, dosage spoon, mixing pad

#### Order no.

7051110

15 g powder, shade A2 / 8 ml liquid, dosage spoon, mixing pad

7051115

15 g powder, shade A3 / 8 ml liquid, dosage spoon, mixing pad

7051116

## 5.2 Glass Ionomer Cements for Luting

## a PremiumLine

### Harvard Ionoglas Cem Extra

Esthetic conventional glass ionomer cement for luting of crowns, bridges, inlays and onlays



#### Properties and advantages

- Reliable luting
- Reduced solubility
- Excellent bonding to dentin & enamel
- High fluoride release, biocompatible & radiopaque
- **OptiCaps® mixing time: 10 sec**
- **Working time: 90 sec (1:30 min)\***

#### Article

15 g powder, shade Universal / 10 ml liquid, dosage spoon, mixing pad

#### Order no.

7042115

50 OptiCaps® ea. 0.4 g, shade Universal

7042250

Harvard Applier OptiCaps®

7092000

### Harvard Ionoresin Cem

Light cure resin-modified glass ionomer cement for luting of crowns, bridges, inlays and onlays



#### Properties and advantages

- Low film thickness
- Virtually insoluble
- Good mechanical properties
- Very low shrinkage
- Safe by 3 cure modes:  
self + light cure  
+ classical cement reaction
- **OptiCaps® mixing time: 10 sec**
- **Working time: 150 sec (2:30 min)\***

#### Article

15 g powder, shade Universal / 10 ml liquid, dosage spoon, mixing pad

#### Order no.

7061115

50 OptiCaps® ea. 0.4 g, shade Universal

7061250

Harvard Applier OptiCaps®

7092000

\* from the start of mixing

## Glass Ionomer Cements for Luting

### b BasicLine

#### Harvard Ionoglas Cem

Conventional glass ionomer cement for luting crowns and bridges



##### Properties and advantages

- Good bonding to dentin and enamel
- Fluoride release, biocompatible & radiopaque
- Easy handling and mixing
- Good marginal fit and seal

##### Article

15 g powder, shade Universal / 10 ml liquid, dosage spoon, mixing pad  
35 g powder, shade Universal / 20 ml liquid, dosage spoon, mixing pad

##### Order no.

7041115

7041135

#### Harvard Ionoglas Cem LC

Light cure resin-modified glass ionomer cement for luting crowns and bridges



##### Properties and advantages

- Radiopaque
- Not sensitive to moisture
- Durable restorations
- Easy to mix and convenient to apply
- Good fit and seal
- Virtually insoluble

##### Article

15 g powder, shade Universal / 10 ml liquid, dosage spoon, mixing pad

##### Order no.

7041215

## 6. Bite Registration and Impression Materials

#### Harvard Bite

Bite registration material based on A-silicone chemistry



##### Properties and advantages

- Precise and distortion-free
- Fast setting
- Very low shrinkage
- Easy to cut, not brittle
- Ideal consistency

##### Article

2 x 50 ml automix cartridge, shade Yellow (Vanilla), 12 mixing tips  
Harvard Auto 1:1 O-Green, refill bag with 50 pcs  
Harvard Dispenser Automix 1:1

##### Order no.

7083700

7096000

7095100

#### Harvard PremiumSil

A-silicone impression materials

##### Properties and advantages

- High hydrophilicity for excellent reproduction of details
- Long working time, short setting time
- Excellent flow properties
- Optimal kneadable consistency for the putty products
- Very low shrinkage
- Suitable for the sandwich technique and the putty-wash technique
- Two setting times

##### Different viscosities: Putty, Putty Soft, Heavy, Mono, Medium, Light



##### Article

2 automix cartridges ea. 50 ml, 12 mixing tips 1:1:  
Harvard PremiumSil Light orange  
Harvard PremiumSil Light Fast orange  
Harvard PremiumSil Medium bright green  
Harvard PremiumSil Medium Fast bright green  
Harvard PremiumSil Mono bright blue  
Harvard PremiumSil Mono Fast bright blue  
Harvard PremiumSil Heavy bright purple  
Harvard PremiumSil Heavy Fast bright purple

##### Order no.

7083701

7083702

7083711

7083712

7083721

7083722

7083731

7083732

380 ml maximix cartridge, 10 dynamic mixers, 1 bayonet ring:  
Harvard PremiumSil Putty Soft purple  
MaxiMix, type 0  
Harvard PremiumSil Heavy Fast bright purple  
MaxiMix, type 2

7083740

7083733

2 jars ea. 300 g, 2 spoons:  
Harvard PremiumSil Putty Fast, type 0 dark purple

7083763

2 jars ea. 600 g, 2 spoons:  
Harvard PremiumSil Putty dark purple  
Harvard PremiumSil Putty Fast dark purple  
Harvard PremiumSil Putty Soft purple  
Harvard PremiumSil Putty Soft Fast purple

7083751

7083752

7083741

7083742

Harvard Auto 1:1 O-Green, refill bag with 50 mixing tips for Harvard PremiumSil Heavy / Heavy Fast

7096000

Harvard Auto 1:1 O-Pink, refill bag with 50 mixing tips for Harvard PremiumSil Mono / Mono Fast

7091200

Harvard Auto 1:1 O-Yellow, refill bag with 50 mixing tips for Harvard PremiumSil Light / Light Fast; Harvard PremiumSil Medium / Medium Fast

7091300

Harvard IntraTips yellow Refill bag with 50 IntraTips for Harvard PremiumSil Light Harvard PremiumSil Light Fast

7083619

Harvard Maxi 5:1 Dynamic, refill bag with 50 dynamic mixers and 2 bayonet rings for Harvard PremiumSil Putty Soft MaxiMix; Harvard PremiumSil Heavy Fast MaxiMix

7091400

Harvard Dispenser Automix 1:1

7095100

#### Harvard TraySive

Conventional tray adhesive for silicone



##### Properties and advantages

- Tray adhesive for all silicone impression materials
- Tacky bond between impression tray and a-silicone

##### Article

10 ml bottle

##### Order no.

7083753

## 7. Accessories and More

### a Accessories

#### Refill bag

**Harvard NeedleTips H17**  
with 50 pcs. for Harvard PremiumFlow 7095157

**Harvard NeedleTips H20**  
with 50 pcs. for Harvard IonoLine,  
Harvard RestoreFlow 7091226

**Harvard NeedleTips H25**  
with 50 pcs. for Harvard Etch 7095126

**Harvard IntraTips yellow**  
with 50 pcs. for Harvard PremiumSil Light,  
Harvard PremiumSil Light Fast 7083619

**Harvard IntraTips long**  
with 50 pcs. for Harvard ZirconCore,  
Harvard LuteCem SE 7083620

**Harvard Mini 1:1 O-Brown**  
with 50 mixing tips for Harvard ZirconCore 7083610

**Harvard Mini 4:1 / 10:1 O-Brown**  
with 50 mixing tips for Harvard LuteCem SE 7091100

**Harvard Mini 4:1 / 10:1 S-Brown**  
with 50 mixing tips for Harvard LuteCem SE,  
Harvard Implant Semi-permanent 7093050

**Harvard Mini 1:1 S-Brown**  
with 50 mixing tips for Harvard TEMP Cem,  
Harvard TEMP Cem Esthetic 7091050

**Harvard Auto 4:1 / 10:1 S-Blue**  
with 50 mixing tips for Harvard TEMP C&B,  
Harvard TEMP C&B Pro 7094000

**Harvard Auto 1:1 O-Green**  
with 50 mixing tips for Harvard Bite,  
Harvard PremiumSil Heavy / Heavy Fast 7096000

**Harvard Auto 1:1 O-Pink**  
with 50 mixing tips  
for Harvard PremiumSil Mono / Mono Fast 7091200

**Harvard Auto 1:1 O-Yellow**  
with 50 mixing tips  
for Harvard PremiumSil Light / Light Fast,  
Harvard PremiumSil Medium / Medium Fast 7091300

**Harvard Maxi 5:1 Dynamic**  
with 50 dynamic mixers and 2 bayonet rings  
for Harvard PremiumSil Putty Soft MaxiMix,  
Harvard PremiumSil Heavy Fast MaxiMix 7091400

**Harvard ErgoGrip**  
for Harvard PremiumFlow syringe 7082220

**Harvard Applier OptiCaps®**  
for all OptiCaps® 7092000

**Harvard Applier OptiTips®**  
for all OptiTips® 7095200

**Harvard Dispenser Automix 4:1 / 10:1**  
for Harvard TEMP C&B,  
Harvard TEMP C&B Pro 7095000

**Harvard Dispenser Automix 1:1**  
for Harvard Bite, Harvard PremiumSil Light / Light Fast,  
Medium / Medium Fast, Heavy / Heavy Fast,  
Mono / Mono Fast 7095100



7092000



7095200



7095000



7095100

## Accessories and More

### b Impression Compounds

#### Harvard Impression Compounds

Thermoplastic impression compound



#### Properties and advantages

- Easy softening in hot water or flame
- Good impression results

#### Article

Compound Red,  
box with 5 plates, 250 g  
Compound Green,  
box with 15 sticks, 125 g

#### Order no.

7082604  
7082605

### c Baseplates

#### Harvard Baseplates

Intermediate for the production of dentures



#### Properties and advantages

- Natural ingredients such as shellac
- Simple handling
- Optimal working time
- Stable basis for the wax/bite wafer
- Plate thickness approx. 1.5 mm

#### Article

12 plates upper jaw  
12 plates lower jaw  
Assorted –12 plates:  
8 plates upper jaw,  
4 plates lower jaw  
100 plates upper jaw  
100 plates lower jaw  
Assorted – 100 plates:  
65 plates upper jaw,  
35 plates lower jaw

#### Order no.

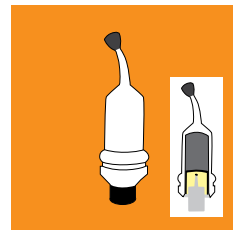
7281005  
7281006  
7281007  
7281105  
7281106  
7281107

## Accessories and More

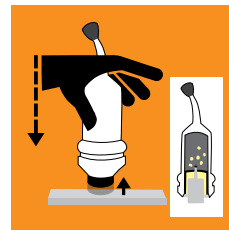
# d Instructions for OptiCaps®

### Instructions for activating and mixing Harvard OptiCaps®

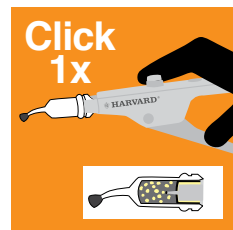
“Click before you mix!”



1. OptiCaps® before activation.

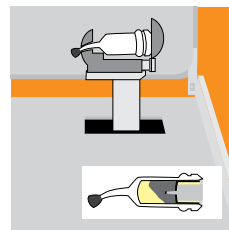


2. For activation of the OptiCaps® press the plunger on a hard and plane surface to the end into the OptiCaps®.

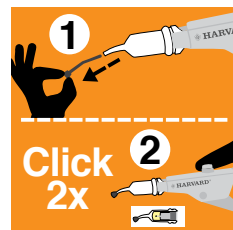


3. Insert the OptiCaps® into the Harvard Applier OptiCaps® and click once to standardize.

Note: The plunger must be at the same level as the bottom of the capsule.

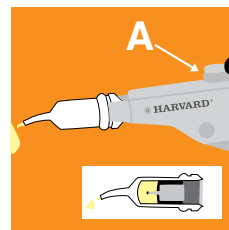


4. Insert the OptiCaps® into a mixer, close lid and mix immediately for the period mentioned in the instructions for use (with about 4300 oscillations / min).



5. Insert the OptiCaps® into the Harvard Applier OptiCaps®. Remove the pin from the nozzle. If not, capsule can burst.

Pull the lever twice (2 clicks) to prime the OptiCaps®.



6. Extrude the mixed material on a glass plate or apply directly. Unlock the gun (push button A) and remove the OptiCaps®.

**Only** with the Harvard Applier OptiCaps® (Order.-No. 7092000) the optimal amount of mixed material is guaranteed.

For the selection of a suitable capsule mixer, our sales and marketing colleagues are gladly available to you.

## Technical Data

Product	Mixing time	Working time*
Harvard MTA XR Flow Fast OptiCaps®	30 sec	120 sec (2:00 min)
Harvard MTA XR Flow EWT OptiCaps®	30 sec	240 sec (4:00 min)
Harvard MTA XR Fast OptiCaps®	30 sec	120 sec (2:00 min)
Harvard MTA XR OptiCaps®	30 sec	120 sec (2:00 min)
Harvard MTA (Universal) OptiCaps®	30 sec	120 sec (2:00 min)
Harvard Cement OptiCaps®	10 sec	180 sec (3:00 min)
Harvard Ionoglas Fill Extra OptiCaps®	10 sec	90 sec (1:30 min)
Harvard Ionoresin Fill OptiCaps®	10 sec	90 sec (1:30 min)
Harvard Ionoglas Cem Extra OptiCaps®	10 sec	90 sec (1:30 min)
Harvard Ionoresin Cem OptiCaps®	10 sec	150 sec (2:30 min)

\* from the start of mixing

## 8. Index of Harvard Products

Product	Shade	Order no.	Page
Applier OptiCaps®		7092000	22
Applier OptiTips®		7095200	22
Auto 1:1 O-Green		7096000	22
Auto 1:1 O-Pink		7091200	22
Auto 1:1 O-Yellow		7091300	22
Auto 4:1/10:1 S-Blue		7094000	22
Baseplates, assorted package		7281107	23
Baseplates, package lower jaw		7281106	23
Baseplates, package upper jaw		7281105	23
Bite, 2 x 50 ml		7083700	21
Bond SE Dual, refill, 2 x 5 ml		7083605	9
Bond SE Mono, 50 SingleDoses		7083609	7
Bond SE Mono, refill, 5 ml		7083601	7
Bond TE Mono, refill, 5 ml		7083607	8
CalciumHydroxide, 2 ml syringe		7071261	12
CalciumHydroxide, 20 x SingleBlis 0.13 g		7071262	12
CalciumHydroxide LC, 2 ml syringe		7071263	12
Cement normal setting, liquid 15 ml		7002600	15
Cement normal setting, liquid 40 ml		7002300	15
Cement normal setting, powder 100 g	1 - white	7002201	15
Cement normal setting, powder 100 g	2 - bluish white	7002202	15
Cement normal setting, powder 100 g	3 - yellowish white	7002203	15
Cement normal setting, powder 100 g	4 - light yellow	7002204	15
Cement normal setting, powder 100 g	5 - yellow	7002205	15
Cement normal setting, powder 100 g	8 - pearl grey	7002208	15
Cement normal setting, powder 100 g	12 - brown	7002212	15
Cement normal setting, powder 100 g	15 - rose	7002215	15
Cement normal setting, powder 35 g	1 - white	7002501	15
Cement normal setting, powder 35 g	2 - bluish white	7002502	15
Cement normal setting, powder 35 g	3 - yellowish white	7002503	15
Cement normal setting, powder 35 g	4 - light yellow	7002504	15
Cement normal setting, powder 35 g	5 - yellow	7002505	15
Cement normal setting, powder 35 g	8 - pearl grey	7002508	15
Cement normal setting, powder 35 g	12 - brown	7002512	15
Cement normal setting, powder 35 g	15 - rose	7002515	15
Cement OptiCaps®, 10 OptiCaps®	Yellowish white	7081310	15
Cement OptiCaps®, 50 OptiCaps®	Yellowish white	7081350	15
Cement quick setting, liquid 15 ml		7001600	15
Cement quick setting, liquid 40 ml		7001300	15
Cement quick setting, powder 100 g	1 - white	7001201	15
Cement quick setting, powder 100 g	2 - bluish white	7001202	15
Cement quick setting, powder 100 g	3 - yellowish white	7001203	15
Cement quick setting, powder 100 g	4 - light yellow	7001204	15
Cement quick setting, powder 100 g	5 - yellow	7001205	15
Cement quick setting, powder 100 g	8 - pearl grey	7001208	15
Cement quick setting, powder 100 g	12 - brown	7001212	15
Cement quick setting, powder 100 g	15 - rose	7001515	15
Cement quick setting, powder 35 g	1 - white	7001501	15
Cement quick setting, powder 35 g	2 - bluish white	7001502	15
Cement quick setting, powder 35 g	3 - yellowish white	7001503	15
Cement quick setting, powder 35 g	4 - light yellow	7001504	15
Cement quick setting, powder 35 g	5 - yellow	7001505	15
Cement quick setting, powder 35 g	8 - pearl grey	7001508	15
Cement quick setting, powder 35 g	12 - brown	7001512	15
Cement quick setting, powder 35 g	15 - rose	7001515	15
Dispenser Automix 1:1		7095100	22
Dispenser Automix 4:1 / 10:1		7095000	22
ErgoGrip		7082220	22
Etch, 2 ml syringe		7054000	8
Implant Semi-permanent, 5 ml syringe	Universal	7081400	13

Product	Shade	Order no.	Page
Impression Compound	Red plates	7082604	23
Impression Compound	Green sticks	7082605	23
InterLock, 2 x 5 ml		7083603	7
IntraTips yellow		7083619	21
IntraTips long		7083620	22
Ionocoat LC, 5 ml		7052000	17
Ionoglas Cem, 15 g / 10 ml	Universal	7041115	20
Ionoglas Cem, 35 g / 20 ml	Universal	7041135	20
Ionoglas Cem Extra (HandMix)	Universal	7042115	19
Ionoglas Cem Extra OptiCaps®, 50 x 0.4 g	Universal	7042250	19
Ionoglas Cem LC, 15 g / 10 ml	Universal	7041215	20
Ionoglas Fill, 10 g / 5.6 ml	A2	7051110	18
Ionoglas Fill, 15 g / 8 ml	A2	7051115	18
Ionoglas Fill, 15 g / 8 ml	A3	7051116	18
Ionoglas Fill LC, 15 g / 8 ml	A3	7052115	18
Ionoglas Fill Extra (HandMix), 15 g / 8 ml	A2	7052112	17
Ionoglas Fill Extra (HandMix), 15 g / 8 ml	A3	7052113	17
Ionoglas Fill Extra (HandMix), 15 g / 8 ml	A3.5	7052135	17
Ionoglas Fill Extra OptiCaps®, 50 x 0.5 g	A2	7052252	17
Ionoglas Fill Extra OptiCaps®, 50 x 0.5 g	A3	7052253	17
Ionoglas Fill Extra OptiCaps®, 50 x 0.5 g	A3.5	7052254	17
IonoLine, 5 ml syringe		7071260	7
Ionoresin Cem (HandMix), 15 g / 10 ml	Universal	7061115	19
Ionoresin Fill OptiCaps®, 50 x 0.4 g	A2	7071250	17
Ionoresin Fill (HandMix), 15 g / 8 ml	A2	7071115	17
Ionoresin Fill (HandMix), 15 g / 8 ml	A3	7071116	17
Ionoresin Fill (HandMix), 15 g / 8 ml	A3.5	7071117	17
Ionoresin Fill OptiCaps®, 50 x 0.5 g	A2	7071250	17
Ionoresin Fill OptiCaps®, 50 x 0.5 g	A3	7071251	17
Ionoresin Fill OptiCaps®, 50 x 0.5 g	A3.5	7071252	17
Ionoresin Prime LC, 5 ml		7051000	17
LuteCem SE, 5 ml syringe	Translucent	7081101	9
LuteCem SE, 5 ml syringe	A2	7081105	9
LuteCem SE, 5 ml syringe	A3 Opaque	7081106	9
Maxi 5:1 Dynamic		7091400	22
Mini 1:1 O-Brown		7083610	22
Mini 1:1 S-Brown		7091050	22
Mini 4:1 / 10:1 O-Brown		7091100	22
Mini 4:1 / 10:1 S-Brown		7093050	22
MTA (Universal) HandMix, 1 g / 3 ml		7081507	12
MTA (Universal) OptiCaps®, 2 x 0.3 g		7081502	11
MTA XR Flow EWT OptiCaps®, 2 x 0.25 g		7081504	11
MTA XR Flow EWT & EndoDirect syringe, 2 x 0.25 g		7081509	11
MTA XR Flow Fast OptiCaps®, 2 x 0.25 g		7081503	11
MTA XR Fast OptiCaps®, 2 x 0.25 g		7081506	11
MTA XR OptiCaps®, 2 x 0.25 g		7081505	11
NeedleTips H17		7095157	22
NeedleTips H20		7091226	22
NeedleTips H25		7095126	22
Polycarboxylat Cement, liquid 15 ml		7031600	15
Polycarboxylat Cement, liquid 40 ml		7031300	15
Polycarboxylat Cement, powder 35 g	3 - yellowish white	7031503	15
Polycarboxylat Cement, powder 35 g	4 - light yellow	7031504	15
Polycarboxylat Cement, powder 100 g	3 - yellowish white	7031203	15
Polycarboxylat Cement, powder 100 g	4 - light yellow	7031204	15
PremiumFill, 4 g syringe	A1	7082201	7
PremiumFill, 4 g syringe	A2	7082202	7
PremiumFill, 4 g syringe	A3	7082203	7
PremiumFill, 4 g syringe	A3.5	7082204	7
PremiumFill, 4 g syringe	B2	7082205	7
PremiumFill, 4 g syringe	Dentin	7082206	7
PremiumFill, 4 g syringe	Incisal	7082207	7
PremiumFill, OptiTips®, 20 x 0.3 g	A1	7083621	7
PremiumFill, OptiTips®, 20 x 0.3 g	A2	7083624	7
PremiumFill, OptiTips®, 20 x 0.3 g	A3	7083625	7

Product	Shade	Order no.	Page
PremiumFill, OptiTips®, 20 x 0.3 g	A3.5	7083626	7
PremiumFill, OptiTips®, 20 x 0.3 g	B2	7083627	7
PremiumFill, Shade Assortment		7082210	7
PremiumFlow, 2 ml syringe	A1	7082211	7
PremiumFlow, 2 ml syringe	A2	7082212	7
PremiumFlow, 2 ml syringe	A3	7082213	7
PremiumFlow, 2 ml syringe	A3.5	7082214	7
PremiumFlow, 2 ml syringe	B2	7082215	7
PremiumFlow, 2 ml syringe	Dentin	7082216	7
PremiumFlow, 2 ml syringe	Incisal	7082217	7
PremiumFlow, OptiTips®, 20 x 0.25 g	A1	7083623	7
PremiumFlow, OptiTips®, 20 x 0.25 g	A2	7083628	7
PremiumFlow, OptiTips®, 20 x 0.25 g	A3	7083629	7
PremiumFlow, OptiTips®, 20 x 0.25 g	A3.5	7083630	7
PremiumFlow, OptiTips®, 20 x 0.25 g	B2	7083631	7
PremiumSil, Heavy, 2 x 50 ml	bright purple	7083731	21
PremiumSil, Heavy Fast, 2 x 50 ml	bright purple	7083732	21
PremiumSil, Heavy Fast, MaxiMix, 380 ml	bright purple	7083733	21
PremiumSil, Light, 2 x 50 ml	orange	7083701	21
PremiumSil, Light Fast, 2 x 50 ml	orange	7083702	21
PremiumSil, Medium, 2 x 50 ml	bright green	7083711	21
PremiumSil, Medium Fast, 2 x 50 ml	bright green	7083712	21
PremiumSil, Mono, 2 x 50 ml	bright blue	7083721	21
PremiumSil, Mono Fast, 2 x 50 ml	bright blue	7083722	21
PremiumSil, Putty, 2 x 600 g	dark purple	7083751	21
PremiumSil, Putty Fast, 2 x 300 g	bright blue	7083763	21
PremiumSil, Putty Fast, 2 x 600 g	dark purple	7083752	21
PremiumSil, Putty Soft, 2 x 600 g	purple	7083741	21
PremiumSil, Putty Soft Fast, 2 x 600 g	purple	7083742	21
PremiumSil, Putty Soft MaxiMix, 380 ml	purple	7083740	21
Restore, System Kit TE Mono		7083207	8
Restore, System Kit Self-Bond		7083217	8
Restore, System Kit Self-Bond Vers. 2A2		7083219	8
RestoreFlow, 3 ml syringe	A1	7083211	8
RestoreFlow, 3 ml syringe	A2	7083212	8
RestoreFlow, 3 ml syringe	A3	7083213	8
RestoreFlow, 3 ml syringe	A3.5	7083214	8
Restore, 4 g syringe	A1	7083201	8
Restore, 4 g syringe	A2	7083202	8
Restore, 4 g syringe	A3	7083203	8
Restore, 4 g syringe	A3.5	7083204	8
Restore, 4 g syringe	B1	7083221	8
Restore, 4 g syringe	B2	7083222	8
Restore, 4 g syringe	C3	7083205	8
Restore, 4 g syringe	C4	7083206	8
Restore, 4 g syringe	Incisal	7083215	8
Restore, 4 g syringe	A1 Opaque	7083209	8
Restore, 4 g syringe	A2 Opaque	7083210	8
Self-Bond, refill		7083218	8
TEMP C&B, 50 ml	A1	7081651	13
TEMP C&B, 50 ml	A2	7081652	13
TEMP C&B, 50 ml	A3	7081653	13
TEMP C&B, 50 ml	A3.5	7081654	13
TEMP C&B, 50 ml	Bleach	7081650	13
TEMP C&B Pro, 50 ml	A1	7081641	14
TEMP C&B Pro, 50 ml	A2	7081642	14
TEMP C&B Pro, 50 ml	A3	7081643	14
TEMP C&B Pro, 50 ml	A3.5	7081644	14
TEMP Cem EasyDose®, 10 ml syringe	Universal	7081103	14
TEMP Cem, 5 ml syringe	Universal	7081100	14
TEMP Cem, 10 ml syringe	Universal	7081200	14
TEMP Glaze LC, 30 ml		7081730	13
TraySive, 10 ml		7083753	21
ZirconCore, 5 ml syringe	A3	7083600	9

# Much more than you expect.

Dealer address