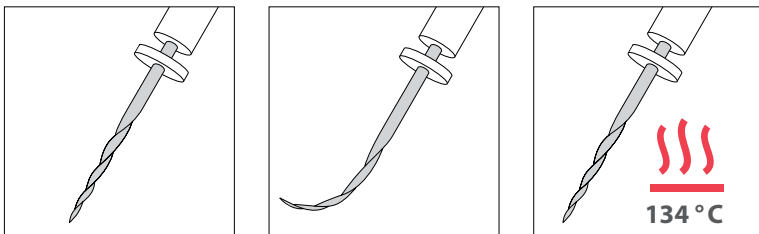


The new generation of NiTi Files



Like a Phoenix from the ashes...
...the regenerative NiTi File!

HyFlex™CM



- > No shape memory + Extreme flexibility = Superior canal tracking
- > Regains shape after heat treatment = Multi-use
- > Up to 300% more resistance to separation

NEW!
STERILE
AND READY
FOR USE

COLTENE®ENDO

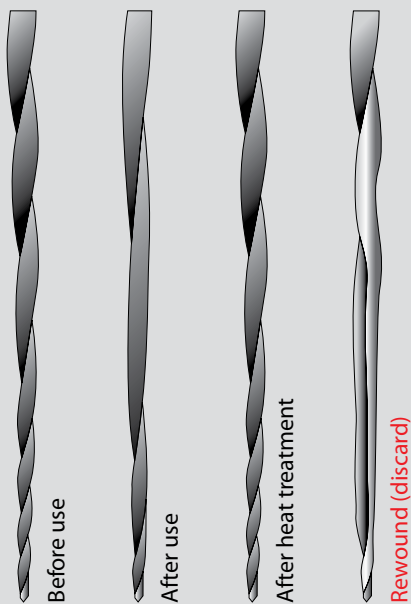
No shape memory
+ Extreme flexibility
= Superior canal tracking

HyFlex™ Controlled Memory NiTi Files have been manufactured utilizing a unique process that controls the material's, making the files extremely flexible but without the shape memory of conventional memory NiTi Files. This gives the file the ability to follow the anatomy of the canal very closely, reducing the risk of ledging, transportation or perforation. Furthermore the files can be pre-bent, similar to the way of stainless steel. Particularly in root canals with abrupt curvatures this can help to avoid the creation of steps.

Controlled Memory



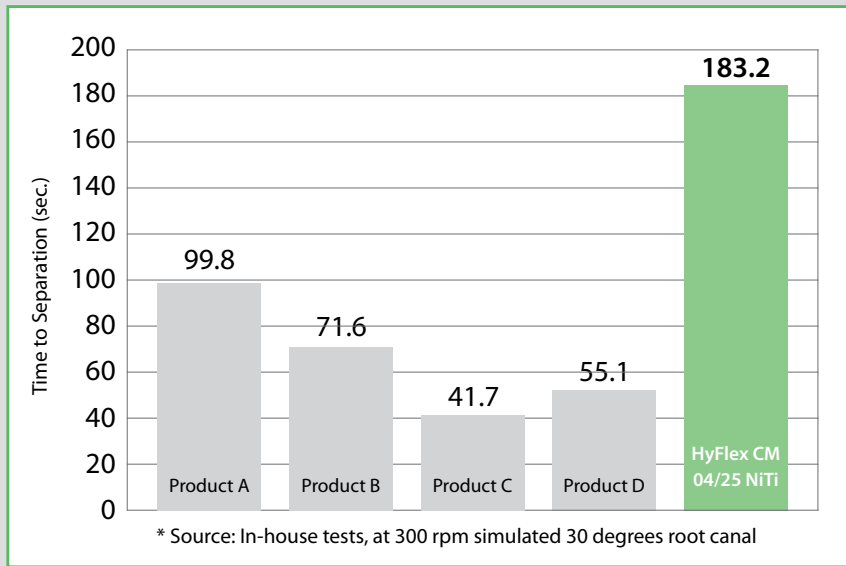
Regains shape after heat treatment
= Multi-use



HyFlex™ CM NiTi Files respond to excessive resistance with straightening of the spirals, which avoids binding to the walls and therefore increases fracture resistance. This form adaptation can be reversed quickly by heat treatment (during autoclaving or with a glass bead sterilizer) returning the instruments back to their original shape. Furthermore it will strengthen the files making them a lot more resistant to cyclical fatigue. Also it provides a clear visual opportunity to verify safe continuation of file use.

Up to 300% more resistance to separation

Cyclic Fatigue Test*



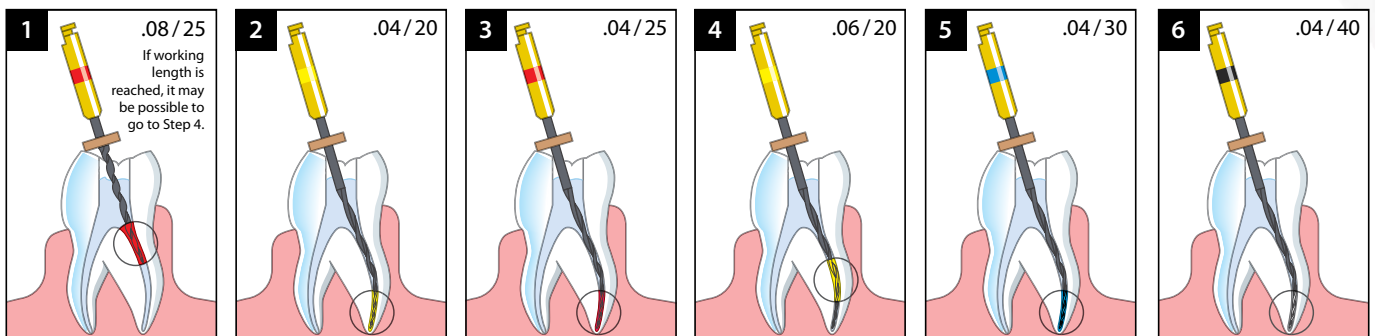
HyFlex™ CM NiTi Files with Controlled Memory are up to 300% more resistant to cyclical fatigue compared to conventional NiTi Files which substantially helps reducing the incidence of file separation.

STEP BY STEP

HyFlex™ CM NiTi Files can be used with crown-down, step-back or our recommended single length technique:

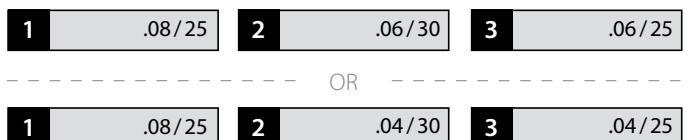
Use your technique or try ours

Use a Slow Speed Handpiece at 500 rpm.
Recommended Torque Setting up to 2.5 N-cm (25 mN-m)

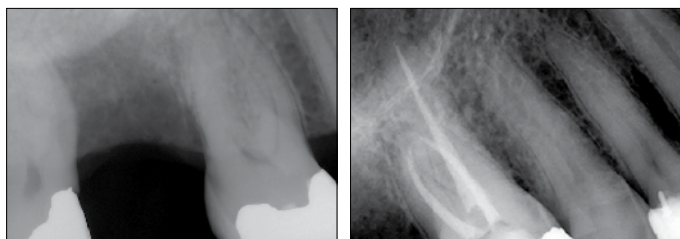


Crown-Down Technique – STEP BY STEP

Depending on the clinical situation, the numbers of files can be reduced to 3 files using the crown down technique.



Clinical Cases

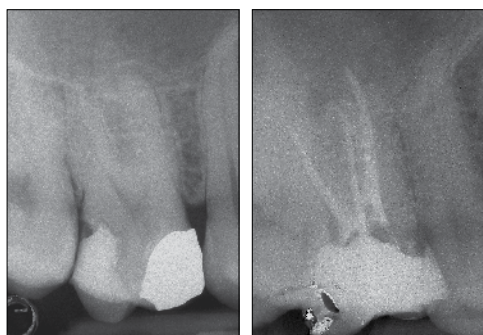


Pre-op

Post-op

Proximal Crack tooth # 16, Instrumented with HyFlex™, canals filled with GuttaFlow®.

Pictures: Prof. Dr. Ricardo Caicedo, University of Louisville, USA



Pre-op

Post-op

Pictures: Dr. Nicola M. Grande, University „La Sapienza“, Rome, Italy

Matching Guttapercha points

COLTENE ENDO offers matching ROEKO Guttapercha points in assortments or single sizes in 0.04 and 0.06 tapers. This makes obturation with warm, cold condensation techniques or the GuttaFlow® system very precise and easy.



CanalPro CL – Cordless Handpiece



- > Thin ergonomic design for better access to hard to reach areas
- > Large, user-friendly LCD panel
- > Memory for up to 5 programs
- > Auto-reverse modus
- > 6 head positions allows of contra angle head to be adjusted to your preferred position
- > Operates continuously for approx. 80 minutes at rated load
- > Quick charging time of approx. 90 minutes – non-contact charger prevents improper charging due to deterioration of metallic terminal
- > Energy-saving, turns off when not used for 10 minutes
- > Contra angle head is autoclavable at 135°C
- > Rotation Speed (min^{-1}): 140 ~ 550
- > Torque Level (N-cm): 0,3 ~ 3,0

HyFlex™ CM NiTi Files & Accessories



HyFlex™ CM NiTi File Refills		
Size	Length	6 pcs
08/25	19 mm	6001 1048
04/15	21 mm / 25 mm / 31 mm	6001 1049 / 6001 1065 / 6001 8284
04/20	21 mm / 25 mm / 31 mm	6001 1050 / 6001 1066 / 6001 8285
04/25	21 mm / 25 mm / 31 mm	6001 1052 / 6001 1067 / 6001 8286
04/30	21 mm / 25 mm / 31 mm	6001 1053 / 6001 1068 / 6001 8287
04/35	21 mm / 25 mm	6001 1054 / 6001 1069
04/40	21 mm / 25 mm / 31 mm	6001 1055 / 6001 1070 / 6001 8288
04/45	21 mm / 25 mm	6001 1056 / 6001 1071
04/50	21 mm / 25 mm / 31 mm	6001 1057 / 6001 1072 / 6001 8289
04/60	21 mm / 25 mm / 31 mm	6001 1058 / 6001 1073 / 6001 8290
06/20	21 mm / 25 mm / 31 mm	6001 1059 / 6001 1074 / 6001 8291
06/25	21 mm / 25 mm	6001 1060 / 6001 1075
06/30	21 mm / 25 mm / 31 mm	6001 1061 / 6001 1076 / 6001 8292
06/35	21 mm / 25 mm	6001 1062 / 6001 1077
06/40	21 mm / 25 mm / 31 mm	6001 1063 / 6001 1078 / 6001 8293

HyFlex™ CM NiTi File Refill Sequence 21 mm

(04/20 21 mm; 04/25 21 mm; 04/30 21 mm; 6001 1064
04/40 21 mm; 06/20 21 mm; 08/25 19 mm); 1 pc each/pack

25 mm

(04/20 25 mm; 04/25 25 mm; 04/30 25 mm; 6001 1079
04/40 25 mm; 06/20 25 mm; 08/25 19 mm); 1 pc each/pack

31 mm

(04/20 31 mm; 04/25 31 mm; 04/30 31 mm; 6001 8294
04/40 31 mm; 06/20 31 mm; 08/25 19 mm); 1 pc each/pack

HyFlex™ CM Introkit Procedure Block

HyFlex™ CM NiTi File Sequence, 21 mm	2 packs	6001 1080
HyFlex™ CM NiTi File Sequence, 25 mm	4 packs	
ROEKO Greater Taper 0.04 20-45	1 box (60 points)	
HyFlex™ CM Endo Procedure Block	1 pc	
HyFlex™ CM Endo Practice Block Pack (3 acrylic blocks)		

HyFlex™ CM Endo Procedure Block

1 pc 6001 1083

HyFlex™ CM Endo Practice Block Pack

3 acrylic blocks 6001 1085

CanalPro CL Cordless Handpiece & Accessories

CanalPro CL Cordless Handpiece & Accessories		
CanalPro CL Complete Set EU / UK (without Apex Locator connection)		6001 1035 / 6001 1036
CanalPro CL Motor Handpiece 1 pc; CanalPro CL Charger 1 pc;		
CanalPro CL Contra Angle 16:1 1 pc		
CanalPro CL Complete Set EU (with Apex Locator connection)		6001 4050
CanalPro CL Motor Handpiece 1 pc; CanalPro CL Charger 1 pc;		
CanalPro CL Contra Angle 16:1 AL 1 pc		
CanalPro CL Motor Handpiece	1 pc	6001 1037
CanalPro CL Charger	1 pc	6001 1038
CanalPro CL Contra Angle 16:1 (without Apex Locator connection)	1 pc	6001 1039
CanalPro CL Contra Angle 16:1 AL (with Apex Locator connection)	1 pc	6001 3747



**Coltene/Whaledent
GmbH + Co. KG**
Raiffeisenstraße 30
89129 Langenau/Germany
Tel. + 49 7345 805 0
Fax + 49 7345 805 201
info.de@coltene.com

Coltene/Whaledent AG
Feldwiesenstr. 20
9450 Altstätten/Switzerland
Tel. + 41 71 757 53 00
Fax + 41 71 757 53 01
info.ch@coltene.com

COLTENE ENDO